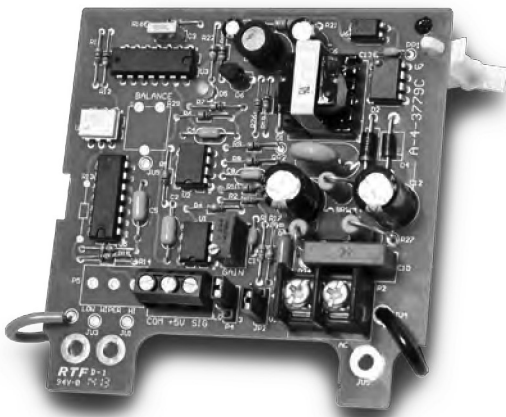
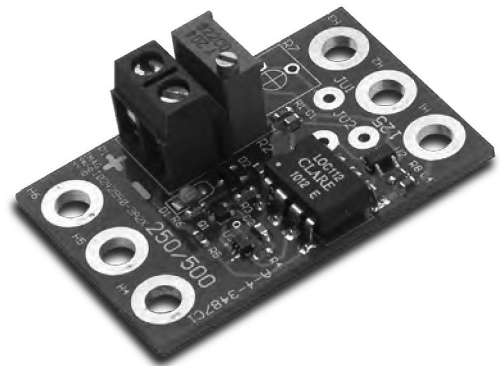


Signal Follower and Serial Interface Options

In many applications it is a requirement that the Dart product being used be interfaced with a supervisory control – plc/micro-controller/computer/HMI. Most applications involve a traditional analog signal sent to the control to set motor speed, and turn the control on or off. More and more we are seeing the need for serial interface over a network – Dart has responded with our Modbus serial interface for the 150 Series. The following details follower/interface options Dart offers and which controls they may be used with in the Analog SCR Drive group.

-5/-7 4-20mA Follower

This is an optically isolated 4-20mA signal follower. It installs on the speed pot terminals of the control. The -5 is a pure signal follower that takes the place of the traditional manual speed pot. The -7 is similar but adds the ability to either control with a local speed pot in Manual mode, or follow the 4-20mA signal in Automatic mode. For models 123D, 125D, 251G, 253G, 130, 132 and 530B



-55H2/-56H2 Voltage and 4-20mA Follower

This is an optically isolated signal follower for signals in the 0-5 to 0-250VDC range. It will also accept 4-20mA signal. The -55H2 is a pure signal follower that takes the place of the traditional manual speed pot. The -56H2 is similar but adds the ability to either control with a local speed pot in Manual mode, or follow the remote signal in Automatic mode. For models 123D, 125D, 153L/D, 251G, and 253G

Send to Drive	Read From Drive
Motor Set Speed	Motor Actual Speed (encoder required)
Drive Accel Rate	Drive Fault Status
Inhibit Drive Output (stop motor)	Drive Ambient Temperature
Power-Up Preset Speed	Drive In Current Limit